

PLEASE CHECK WWW.MOLEX.COM FOR LATEST PART INFORMATION

Part Number: [0511140210](#)
Status: **Active**
Description: 3.50mm (.138") Pitch Wire-to-Wire Plug Housing, Positive Lock, With Optional Panel Mount, 2 Circuits

Documents:

[3D Model](#) [Product Specification PS-51067-008 \(PDF\)](#)
[Drawing \(PDF\)](#) [RoHS Certificate of Compliance \(PDF\)](#)

Agency Certification

CSA	LR19980
TUV	R72081037
UL	E29179

General

Product Family	Crimp Housings
Series	51114
Product Name	N/A

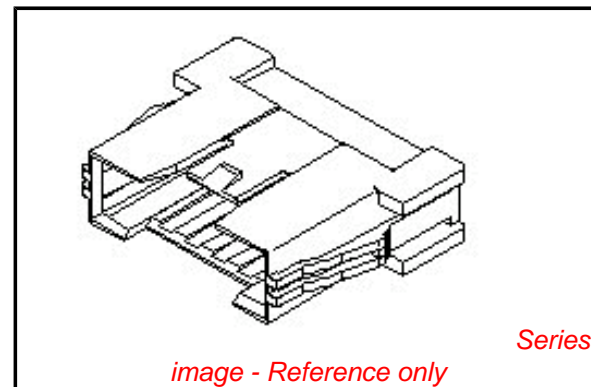
Physical

Circuits (maximum)	2
Color - Resin	Natural
Flammability	94V-0
Gender	Male
Glow-Wire Compliant	No
Material - Resin	Polyester
Number of Rows	1
Packaging Type	Bag
Panel Mount	No
Pitch - Mating Interface (in)	0.138 In
Pitch - Mating Interface (mm)	3.50 mm
Stackable	No
Temperature Range - Operating	-40°C to +105°C

Material Info

Reference - Drawing Numbers

Product Specification	PS-51067-008
Sales Drawing	SD-51114-**10



EU RoHS

ELV and RoHS Compliant
REACH SVHC Contains SVHC: No
Halogen-Free Status

China RoHS



Not Halogen-Free

Need more information on product environmental compliance?

Email productcompliance@molex.com
 For a multiple part number RoHS Certificate of Compliance, [click here](#)

Please visit the [Contact Us](#) section for any non-product compliance questions.

Search Parts in this Series

[51114Series](#)

Mates With

[51067](#)

Use With

[50419](#)

E

D

MM DIMENSIONS IN METRIC DO NOT SCALE DRAWING

A

8

7

6

5

4

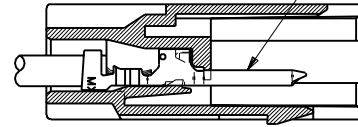
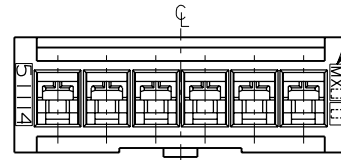
3

2

1

トレードマーク
TRADE MARK

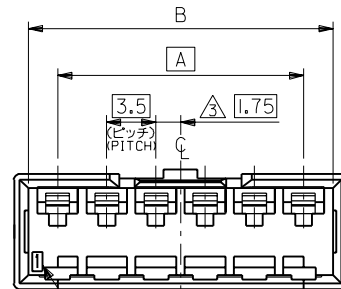
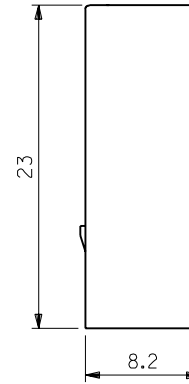
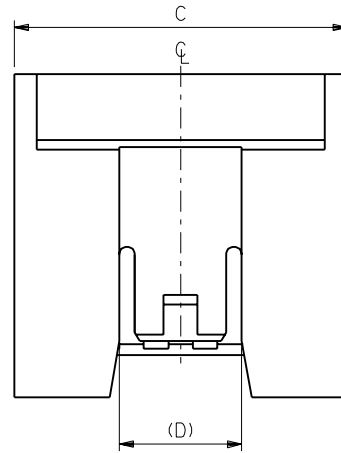
プラグ ターミナル
PLUG TERMINAL



注記 NOTES

- △ 適合プラグ ターミナル：50419-****
APPLICABLE PLUG TERMINAL：50419-****
- 2. 嵌合相手：51067 シリーズ
MATE WITH：51067 SERIES
- △ 偶数極の製品に適用。
APPLY EVEN CIRCUIT PRODUCTS.

ターミナル装着状態図
TERMINAL ASSEMBLY DRAWING



回路番号
CIRCUIT NO.

	8.7	37.7	35.7	31.5	51114-1010	10
		34.2	32.2	28.0	-0910	9
↑		30.7	28.7	24.5	-0810	8
		27.2	25.2	21.0	-0710	7
↓		23.7	21.7	17.5	-0610	6
		20.2	18.2	14.0	-0510	5
	8.7	16.7	14.7	10.5	-0410	4
	6.1	13.2	11.2	7.0	-0310	3
	6.1	9.7	7.7	3.5	51114-0210	2
(D)	C	B	A	ENG. NO.	CKT. 極数	

角度 ANGLE	±3°				
30 以上 OVER	+0.3				
10 以上 OVER 30 未満 UNDER	+0.25				
10 未満 UNDER	+0.2	0	新規作成 (J30900)	M.F.	H.H. '93/9/7
一般公差	記号	変更内容		DR.	日付
GENERAL TOLERANCES	LTR	REVISION RECORD		CHK.	DATE

材料 MATERIAL	PBT, UL94V-0	モレックス MOLEX-JAPAN CO.,LTD. 日本モレックス株式会社
仕上げ FINISH	— # —	REVISION ONLY ON CAD SYSTEM
適用電線範囲 WIRE RANGE	— # —	TITLE 名称
被覆外径 INS. RANGE	— # —	3.5 WIRE TO WIRE CONN. PLUG HOUSING
DRAWN BY '93/5/24 M.FUJIKURA CHK'D BY '93/9/7 H.HIRAMOTO		DWG. NO.
APP'D BY '93/9/7 M.FUKUSHIMA 尺度 SCALE 3 : 1		SD-51114-***10
		REV 0

8

7

6

5

4

3

2

1

S5111410J01